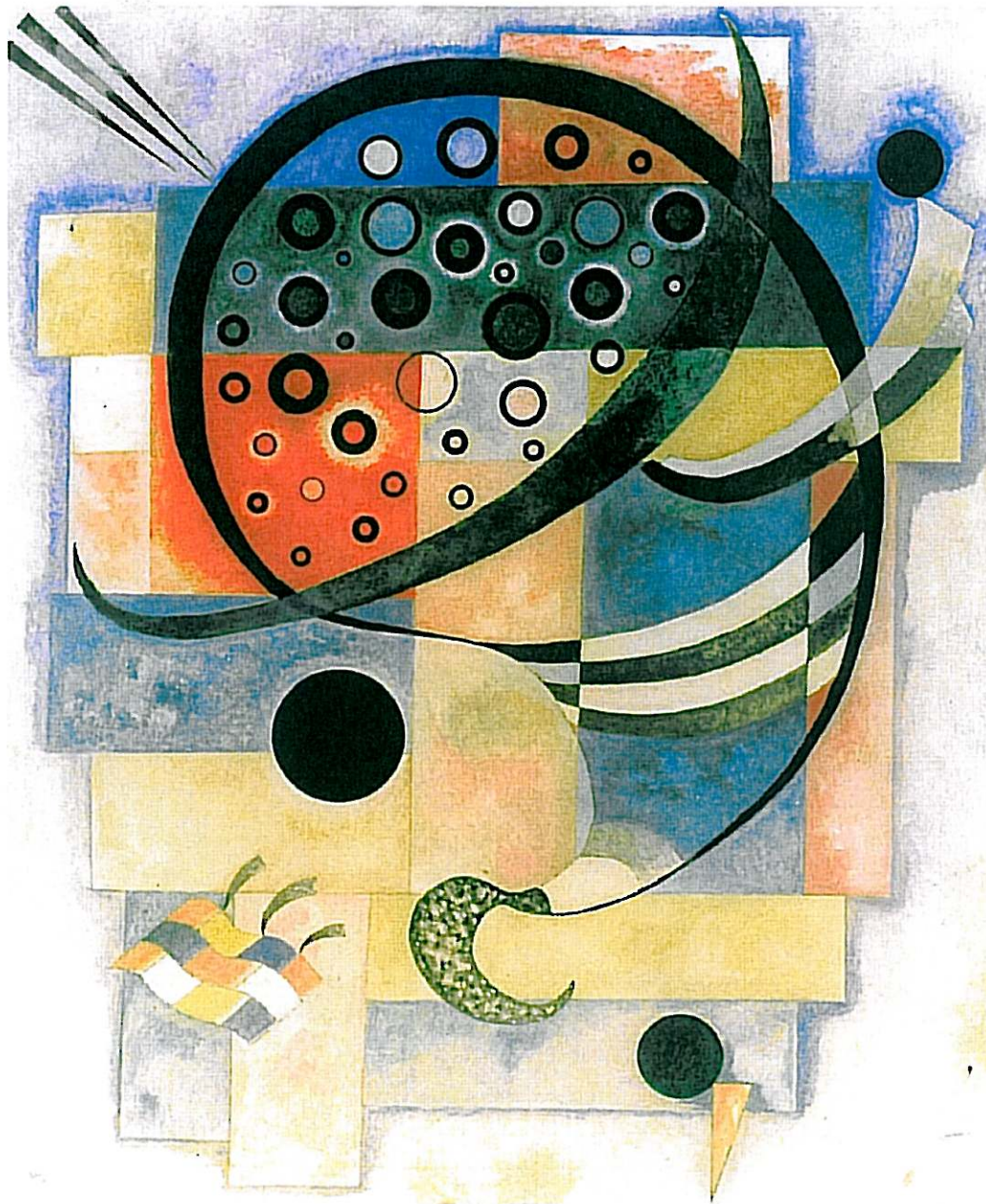


# XLVII ERA-EDTA CONGRESS II DGfN CONGRESS

JUNE 25-28, 2010

Munich, Germany



Kandinsky, an Artist in Munich

Fixe 1935, Wassily Kandinsky  
© VG Bild-Kunst, Bonn 2009



**EUROPEAN RENAL ASSOCIATION**

EUROPEAN DIALYSIS AND TRANSPLANT ASSOCIATION

Registered Charity n° 1060134

Deutsche Gesellschaft

für Nephrologie



[www.eraedta2010.org](http://www.eraedta2010.org)

Su024

RECURRENT DEEP INTRONIC MUTATION (c.1670-191C>T) IN THE SLC12A3 GENE RESPONSIBLE FOR TAIWAN ABORIGINES WITH GITELMAN'S SYNDROME

Shih-Hua Lin,<sup>1,2</sup> Yi-Fen Lo,<sup>2</sup> Che-Chung Huang,<sup>1</sup> Sung-Sen Yang,<sup>1,2</sup> Yu-Wei Fang,<sup>3</sup>

<sup>1</sup>Div Nephrology, Dept Medicine, Tri-Service General Hosp, <sup>2</sup>Grad Inst Life Sciences, National Defense Medical Center, Taipei, Taiwan; <sup>3</sup>Div Nephrology, Dept Medicine, Shin Kong Wu Ho-Su Memorial Hosp, Taipei, Taiwan

Su025

CALCIC NEPHROLITHIASIS, A DOUBLE-BLIND RANDOMIZED STUDY, 2008-2009

Mirna Caridad Atiés Sánchez,<sup>1</sup> Valentina Edghill Villanueva.<sup>2</sup>

<sup>1</sup>Dept Hemodialysis, National Inst Nefrology Abelardo Buch López City Havana, Havana, Cuba; <sup>2</sup>Dept Nefrology Clinical, Hosp Julio Trigo López, City Havana, Havana, Cuba

Su026

UROLITHIASIS AND BETA THALASSAEMIA MAJOR

Nikhil Johri, William Robertson, Robert Unwin, Stephen Walsh.

Centre Nephrology, Royal Free Campus UCL Medical School, London, UK

Su027

SERUM POTASSIUM LEVELS ON ADMISSION AND INFARCT SIZE IN PATIENTS WITH ACUTE MYOCARDIAL INFARCTION

Marcel Roos,<sup>1</sup> Gjin Ndrepepa,<sup>2</sup> Marcus Baumann,<sup>1</sup> Cheng-Rui Pan,<sup>1</sup> Uwe Heemann,<sup>1</sup> Jens Lutz,<sup>1</sup> Julinda Mehilli,<sup>2</sup> Albert Schömig,<sup>2</sup> Adnan Kastrati.<sup>2</sup>

<sup>1</sup>Nephrology, Klinikum rechts der Isar, TU München, Germany; <sup>2</sup>Cardiology, Deutsches Herzzentrum München, München, Germany

Su028

STEROID INDUCED HYPERCALCIURIA; INCIDENCE, COURSE AND ASSOCIATED FACTORS

Omer Duzen,<sup>1</sup> Reha Erkoc,<sup>2</sup> Huseyin Begenik,<sup>2</sup> Yasemin Usul Soyoral,<sup>2</sup> Mehmet Naci Aldemir.<sup>3</sup>

Internal Medicine, Adilcevaz Hosp, Bitlis, Turkey; Nephrology, Yuzuncu Yil Univ Medical School, Van, Turkey; Internal Medicine, Yuzuncu Yil Univ Medical School, Van, Turkey

Su029

A COMPARISON OF METABOLIC VARIABLES AMONG OBESE AND NON-OBESE KIDNEY STONE FORMERS

Nikhil Johri, Bill Robertson, Steven Walsh, Chris Laing, Robert Unwin.

Centre Nephrology, Univ College London, Royal Free Campus, London, UK

Su030

HYPERKALEMIA IN HEMODIALYSIS PATIENTS NOT ALL IS SAID

Julio Chevarría, Marta Sánchez, Katia Pérez, Beatriz Hernández, Serafin Tallón, Gabriel De Arriba.

Nephrology, Guadalajara's Univ Hosp, Guadalajara, Spain

JUNE 27

# Double-Blind Randomized Study: Efficacy and Safety of RENALOF in the Treatment of Patient Carriers of Renal Calcium Oxalate Lithiasis (2009)

M. Atiés<sup>1</sup>, V. Edigill<sup>1</sup>, M. Abreu<sup>1</sup>  
1. Cuban Institute of Nephrology

## Introduction

The most common kidney stone is calcium, predominantly composed of calcium oxalate stones which is responsible for 1 in 1,000 hospitalizations per year and the recurrence rate is high, standing at 10 to 20% in the first two years and by 40-60% after ten years of the first episode.

Renalof (capsules of 325 mg) is a nutritional supplement that provides global actions on renal oxalate and calcium phosphate in the urinary tract, causing destruction and / or decrease.

We conducted a clinical trial to evaluate the efficacy and safety of Renalof in the treatment of recurrent calcium urolithiasis.

## Renalof Ingredients

Agropyron Repens Extract (12 mg), Mannitol (88 mg), Corn Starch (200 mg), Magnesium Silicate (25 mg)

## Methods

Phase III clinical trial placebo-controlled, randomized, two double-blind parallel group. The patients were recruited and treated at the Nephrology Institute of Cuba.

### Inclusion criteria

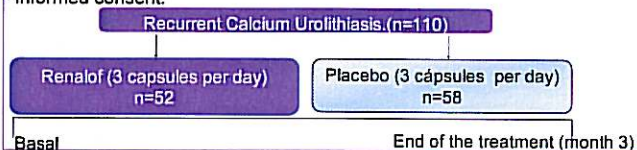
- Both sexes.
- Age between 18-65 years old.
- Presence of calcium oxalate urolithiasis.
- Patients with stones less than one centimeter.
- Informed consent.

### Exclusion criteria

- Patients with stones larger than one centimeter.
- Pregnant woman.
- Oncoproliferative disease.
- Previous treatment for the destruction of the kidney stone.

### End points

- Stone size.
- Stone numbers.
- Number of renal colic.
- Physical-Chemical disorders.
- Metabolic disorders.
- Days of hospitalization.
- Days with medical certification.
- Presence of adverse reaction.



## Results

Figure 1: Evolution of the Stones' size

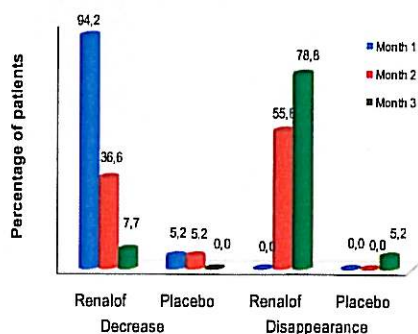


Figure 2: Number of kidney stones

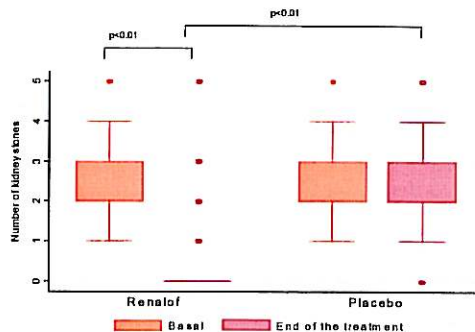
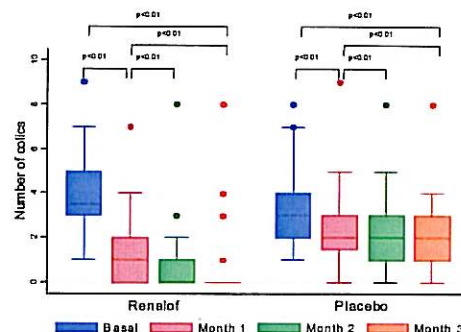


Figure 3: Number of renal colic



$P < 0.01$  in all comparisons except in the disappearance of calculi (month 1), non calculated.

Differences between groups  $p < 0.01$  from the first month

Figure 4: Hypercalciuria

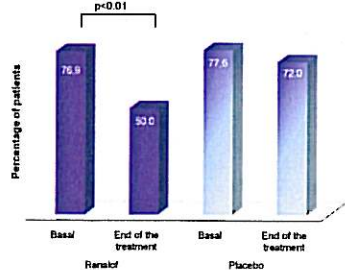


Figure 5: Ph\*

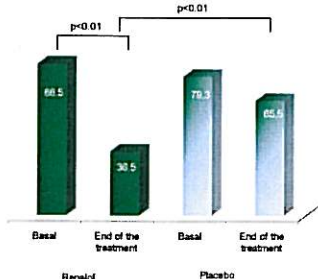


Figure 6: Phosphate activity group\*

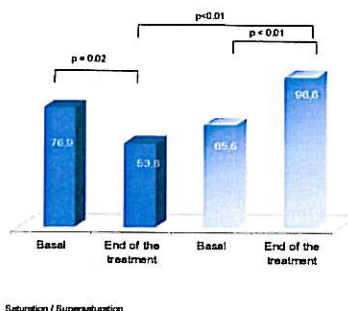


Figure 7: Urinary volume\*

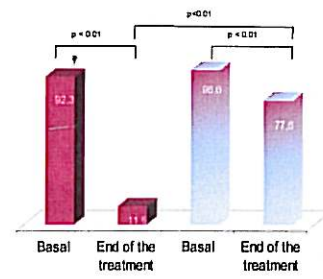


Figure 8: Medical certificates

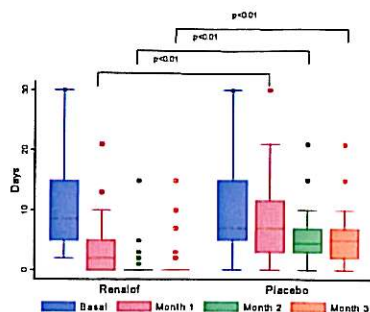
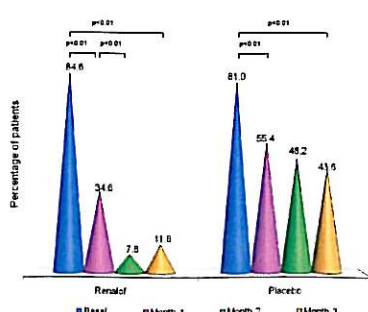


Figure 9: Hospitalised patients



•The hiperoxaluria, hypocitraturia and hyperuricosuria not difere before / after and between groups at the endpoint ( $p > 0.05$ ).

•The oxalate activity product produces differences before / after only in the Renalof group ( $p < 0.01$ ).

•The crystallization risk index shows differences before / after in the Renalof group ( $p < 0.01$ ) and between groups at the end of the treatment  $p < 0.01$ .

•During the treatment there were no unexpected serious adverse events.

## Conclusions

Renalof is effective and safe for the treatment of recurrent calcium urolithiasis.



**ERA-EDTA**

European Renal Association  
European Dialysis Transplant  
Association  
Operative Headquarters  
Via Spolverini 2  
I-43126 Parma - Italy  
Phone: +39-0521-989078  
Fax: +39-0521-959242  
E-mail: congress@era-edta.org  
www.era-edta.org

Deutsche Gesellschaft  
für Nephrologie



**DGfN**

Deutsche Gesellschaft  
für Nephrologie e.V.  
Geschäftsstelle  
Seumestraße 8  
D-10245 Berlin - Germany  
Phone: +49-(0)30-5213.7269  
Fax: +49-(0)30-5213.7270  
E-mail: gs@nephrologie.de  
www.dgfn.eu  
www.nephrologie.de

[www.eraedta2010.org](http://www.eraedta2010.org)